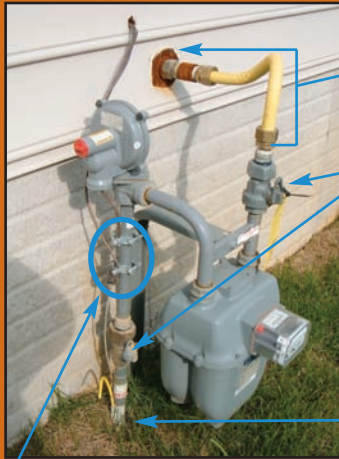


# Incorrect Bonding:



Gas House Piping  
(bond to this piping)

Insulated Unions  
(electrically isolated)

BGE's gas service is plastic piping – no earth ground available. The yellow wire is also BGE's and not for bonding.

Do Not Bond to BGE  
Metering Equipment  
(electrically isolated)

# Correct Bonding:



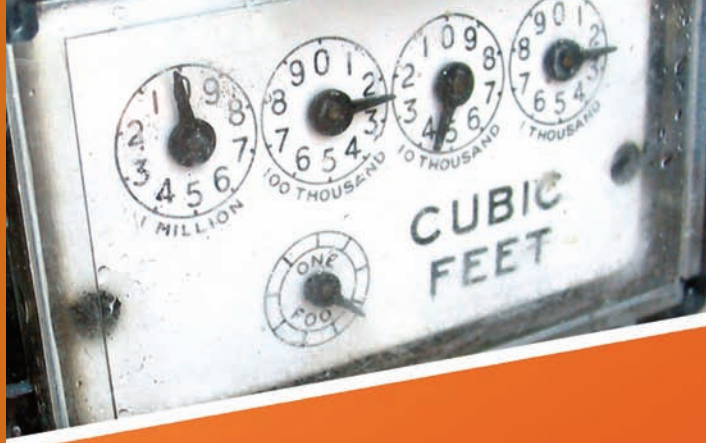
Example of a correct bond  
location for the gas house  
piping

House bond wire connected  
to non-BGE equipment

Questions?  
Please call 410-850-4620 or  
1-800-233-1854

**BGE**

A Constellation Energy Company



WORK SAFETY TIPS FROM BGE...

# BONDING TO GAS METERS



# WHAT IS BONDING?

In a building served with electricity, safety codes require all metal objects (such as pipes) to be connected/bonded to the “earth ground”, which typically consists of a ground rod or mat installed by a licensed electrician.

Special clamps installed on the pipes allow the connection of heavy duty wires between the metal objects and building ground system.

## What is Wrong at My House?

As illustrated on the top of the back panel, there is incorrect bonding from the gas house piping to BGE's gas metering equipment. The connection of the bonding conductors to the metering equipment does not provide a proper ground. Therefore, a BGE representative has removed the ineffective bond from our equipment.

## How Can This Be Corrected?

It is important that you contact a licensed electrician to perform the work necessary to obtain the bonding required by national codes. For example, your electrician may choose to connect the bonding conductors from the gas house piping to the customer's side of BGE's metering equipment at a point past the meter outlet valve (the customer's main gas valve). If your electrician has questions about why the bonding conductor was removed from BGE's equipment, he may call BGE at 410-850-4620.

## What Could Happen if This is NOT Corrected?

The combination of an ineffective bond and an appliance failure could cause gas house piping to become energized. Contact with the piping or BGE metering equipment after an electrical failure could cause personal injury. Therefore, it is important to contact your electrician as soon as possible.